

# AMTI Force Plate

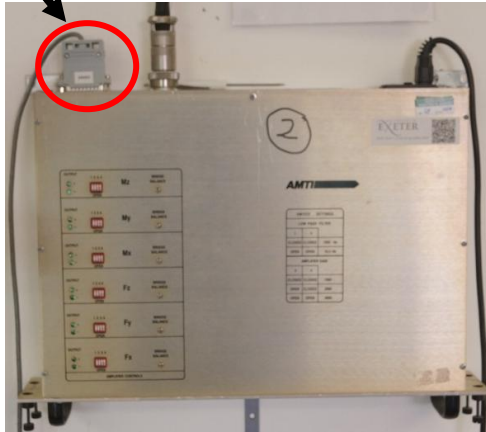
## User Guide



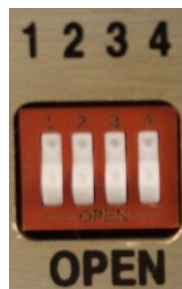
**Note:** These guidelines apply when using the floor forceplate with the force plate PC in RB01 (teaching lab).

# Equipment Preparation

1. Connect floor force plate to top of amp (left of the TV).



2. Adjust amp gain settings to 1000 (i.e. set all switches to 'close' on all channels).



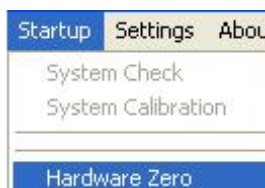
3. Switch amp on
4. Switch on force plate PC.

# Force Plate Software Preparation

1. Open AMTINetForce software



2. Click Startup → Hardware zero



3. Select save location

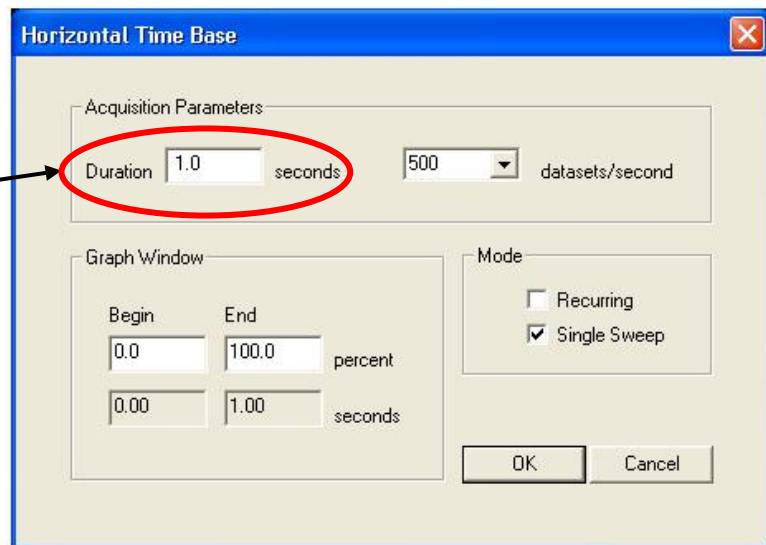
- i. Either, set up new data folder
    - o Click DataFolder → Select folder → Create new data folder within directory C:\AMTINetForce\ExcelStart\Data → Open
  - ii. Or, select an existing data folder:
    - o Click DataFolder → Select folder → Select directory C:\AMTINetForce\ExcelStart\Data → Select appropriate folder and open.
- A message will confirm the folder you have selected



4. Set up data acquisition parameters

- o Click Settings → Acquisition settings
- o In “horizontal time base” window set parameters as shown in image:

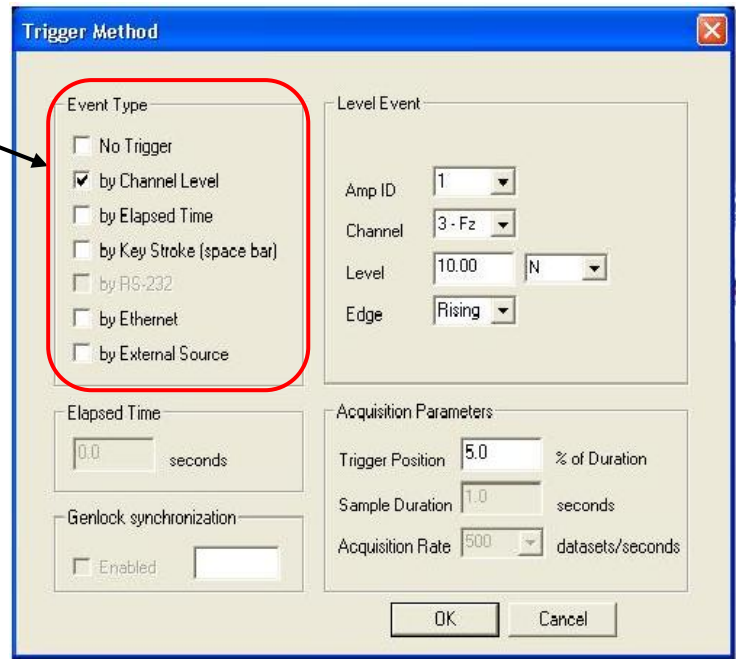
Note: 1 sec for jogging across plate, 2 secs for turning on plate



5. Set up trigger settings

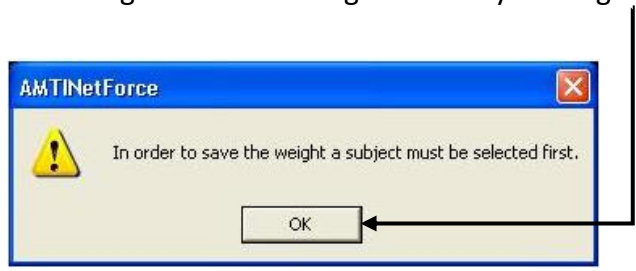
- o Click Settings → Trigger settings
- o In “Trigger method” window set parameters as shown in image:

Note: Channel level to start data collection as participant hits the plate; key stroke to start data collection with the participant on the force plate

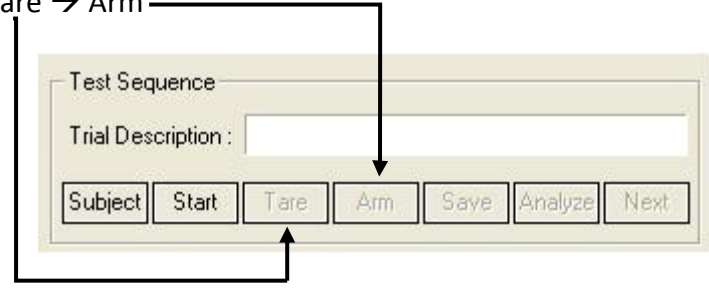


## Data collection

1. Start → Ignore the warning window by clicking OK until it disappears



2. Click Tare → Arm



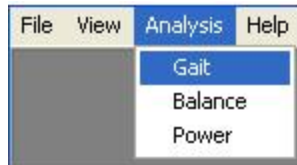
3. Have participant perform required action
  - If small green bar at top of screen goes red = Error → Repeat trial.
  - Data collection must be continuous with no pauses/stops to avoid issues in subsequent analysis.
4. Save
  - Use a simple file name with no spaces or punctuation.

# Exporting data

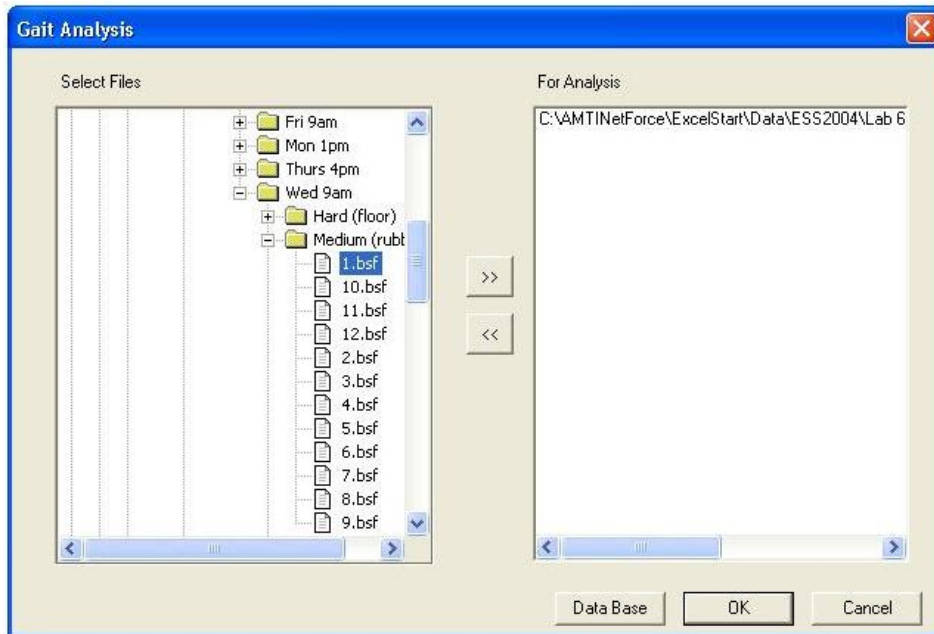
1. Open BioAnalysis software



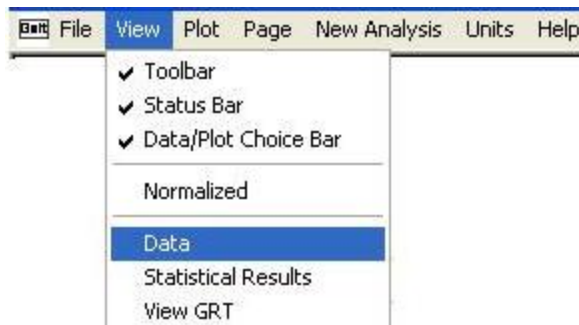
2. Analysis → Gait (even if doing a balance task)



3. Select file (s) → Move across to 'For Analysis' column → OK



4. View → Data



5. Save

- Only platform 1 is real data (platform 2 is 'noise')



6. Open Excel → Open → Select all file types → Select file → Set delimiter to comma only (i.e. uncheck tab) → Next → Finish.